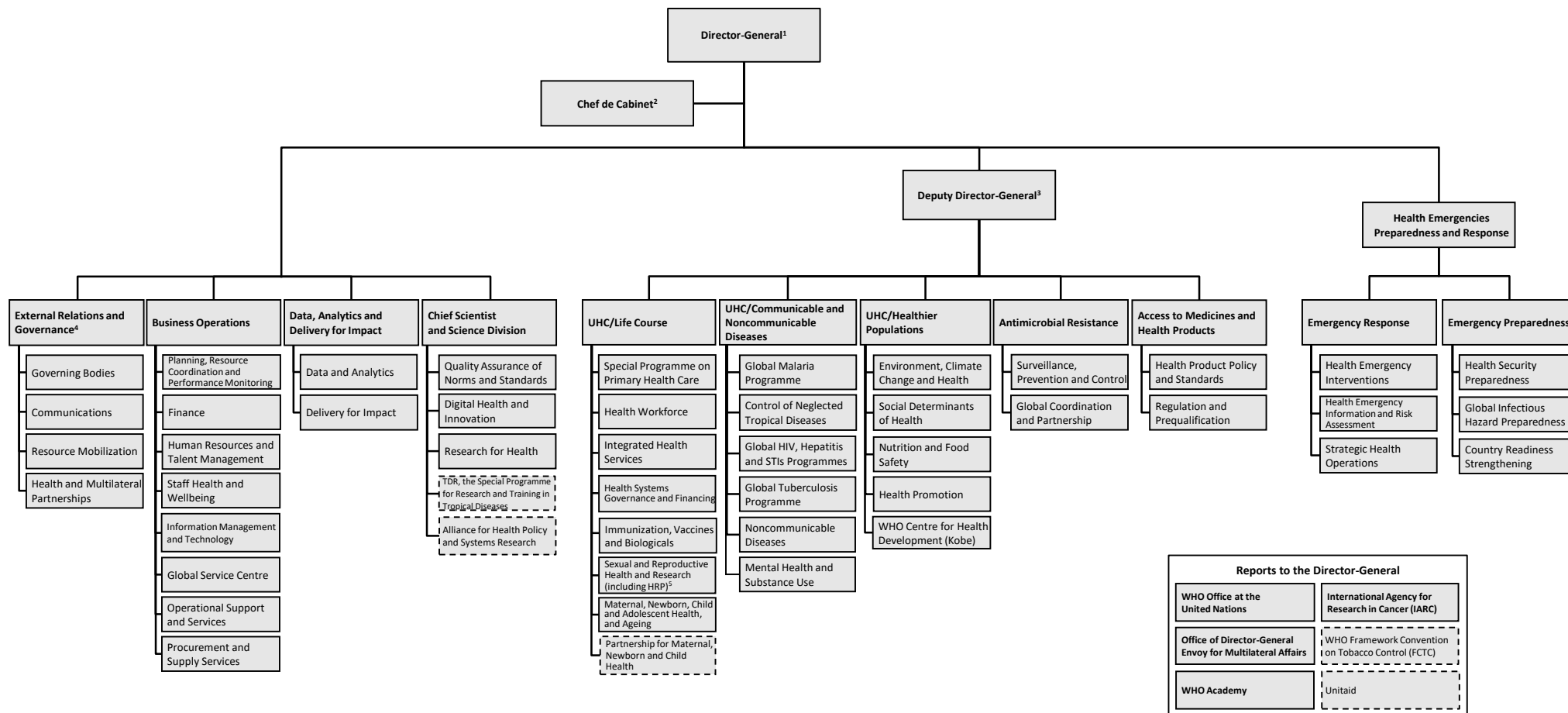


World Health Organization Headquarters

(as of 15 January 2020)



¹ includes Office of Internal Oversight Services (IOS), Evaluation Unit (EVL), Office of the Legal Counsel (LEG), Compliance and Risk Management and Ethics (CRE), Office of the Ombudsman and Mediation Services (OMB), Country Strategy and Support (CSS), Transformation Implementation and Change (TIC), Advisors to the Director-General; ² includes Office of the Director General, Polio Eradication (POL), Global Preparedness Monitoring Board (GPMB), Independent Oversight Advisory Committee (IOAC), Gender, Equity and Human Rights (GER), Global Board of Appeals (GBA); ³ includes DDG Office, Chief Nurse, Global NCD Platform, Polio Transition, Health and Migration; ⁴ coordinates with the Office at the EU; ⁵ research agenda coordinated with Chief Scientist

Co-sponsored Programme, Hosted Partnership or Other Hosted Entity